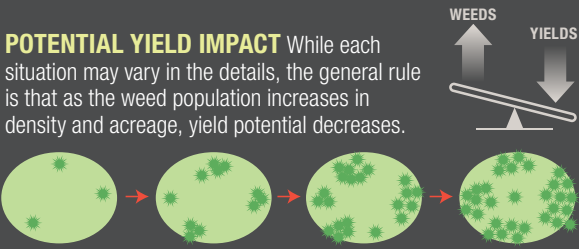
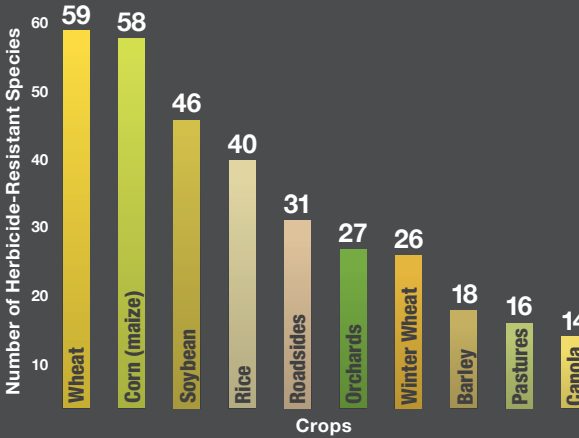


# Prevent Resistance

A herbicide resistance problem doesn't develop overnight. Usually, it's the result of high selection pressure exerted on a weed population over the course of several years. By repeatedly applying the same herbicide or several herbicides that use the same mode of action, growers can inadvertently create that pressure. The results of herbicide resistance can be extremely costly. In the long run, taking a proactive approach to weed management is the most effective and economical way to tackle this problem. The first step toward effective weed resistance management is to know the facts.



**TOP 10 CROPS** Many of the global food supply's most important staples are affected by resistant weeds. The U.S. has an especially challenging situation with 145 identified weeds resistant to herbicides.

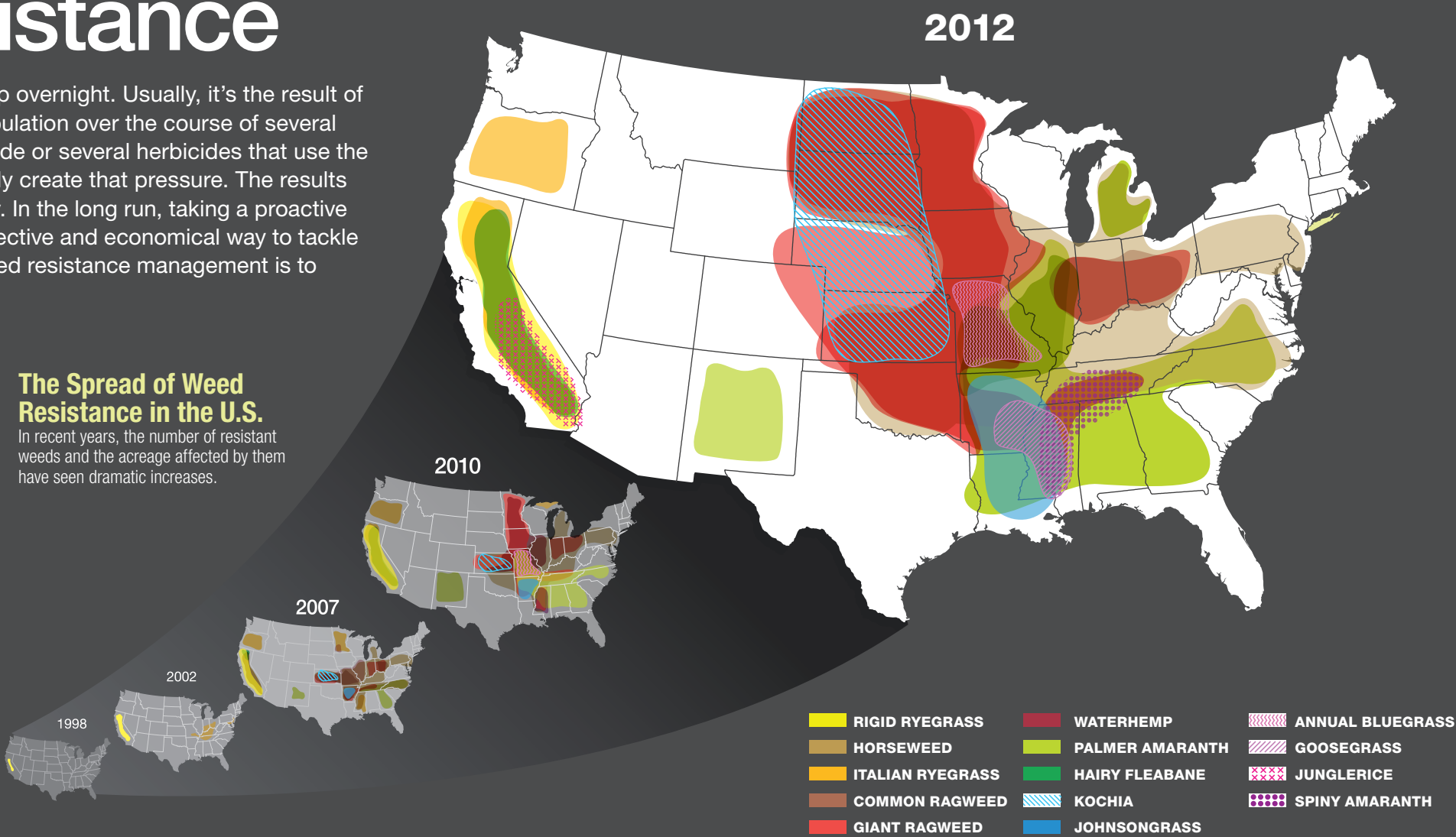


**404**  
unique cases  
(species x mode  
of action) of  
herbicide-resistant  
weeds globally



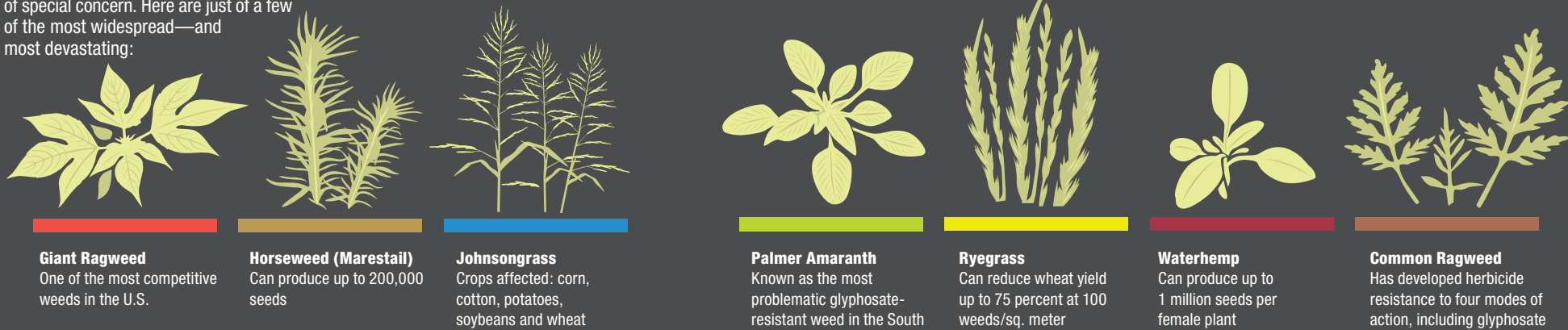
## The Spread of Weed Resistance in the U.S.

In recent years, the number of resistant weeds and the acreage affected by them have seen dramatic increases.



## WEED RESISTANCE AND GLYPHOSATE

Glyphosate-resistant weeds have been of special concern. Here are just a few of the most widespread—and most devastating:



## POWER MEASURES



Apply residual herbicides with multiple modes of action.



Increase herbicide diversity with premixes and tank mixes.



Rotate crops, which also allows rotation of herbicide modes of action.



Scout fields, borders, fencerows and ditches for weed pressure.



Start with clean fields, including borders.



Use full herbicide rates, carrier and recommended adjuvant(s).



Consider mechanical weed control (cultivation), if appropriate.



Use cover crops to help knock down existing weed populations.

Sources: Heap, I. The International Survey of Herbicide Resistant Weeds. Online. Internet. Friday, November 15, 2013. (graph, number of resistant weeds)  
"What is Weed Resistance," Lesson 5. Weed Science Society of America. Online. Internet. Friday, November 15, 2013. (illustration of progressive weed density)